

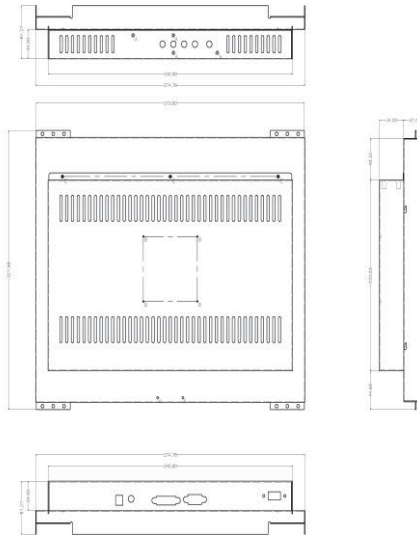
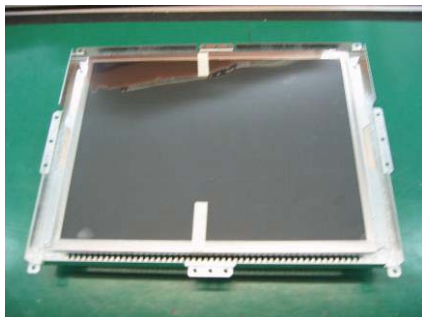
TouchScreen TFT LCD Monitor OP15D1 / OP17D1 / OP19D1

Touchscreen Sensor Resistive Type (Optional Capacitive Type)

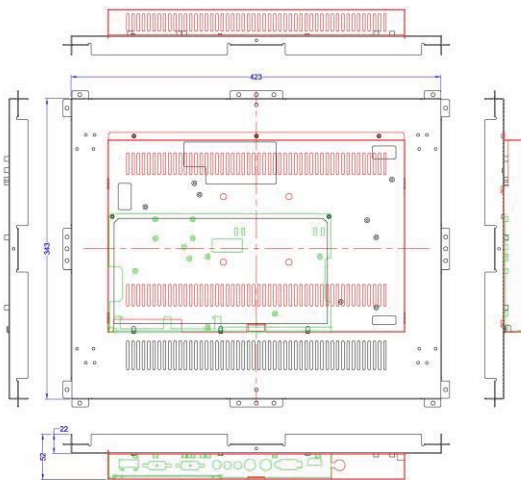
Controller Interface: USB or RS232

Driver & Utility: Win95/98/ME/2000/XP and Linux (RedHat/Mandrake)

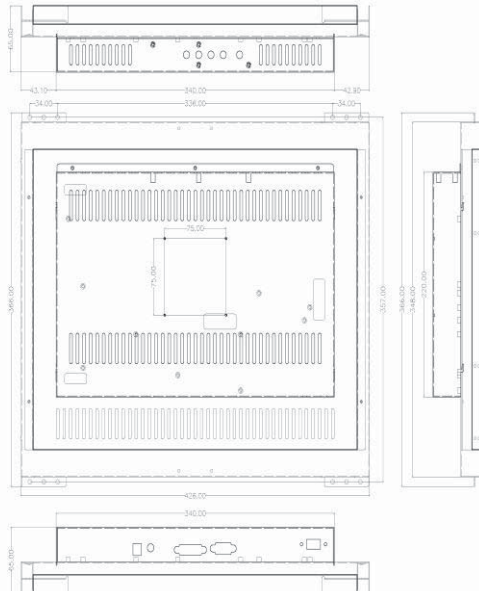
Applications: Public Reception & Transportation / Health Care / Government Agencies / ATM / Kiosks / Touch Phones



OP15D1



OP17D1



OP19D1

Typical Specification		15 inch Touch Screen Monitor	17 inch Touch Screen Monitor	19 inch Touch Screen Monitor
Model No.		OP15D1	OP17D1	OP19D1
Function push bottom		5 keys	5 keys	5 keys
Video / Graphic Processing				
LCD Panel Type		15" Diagonal	17" Diagonal	19" Diagonal
Maximum Resolution		1024 (H) x 768 (V)	1280 (H) x 1024 (V)	1280 (H) x 1024 (V)
Active Display Area		304.128(H) x 228.096(V) mm	337.920(H) x 270.336(V) mm	376.32(H) x 301.06(V) mm
Pixel Dimension		0.297(H) x 0.297(V) mm	0.264(H) x 0.264(V) mm	0.294H) x 0.294(V) mm
Brightness		250 cd/m2 (Typical)	250 cd/m2 (Typical)	250 cd/m2 (Typical)
Brightness w/Touch screen		220 cd/m2 (Resistive Type)	220 cd/m2 (Resistive Type)	220 cd/m2 (Resistive Type)
		235 cd/m2 (Capacitive Type)	235 cd/m2 (Capacitive Type)	235 cd/m2 (Capacitive Type)
Contrast Ratio		600:1 (Typical)	1000:1 (Typical)	1000:1 (Typical)
Response Time (Tr/Tf)		8ms	5ms	5ms
Viewing Angle		CR >=10 Horizontal -80°/+ 80°;(160) Vertical -80° /+ 80°;(160)	CR >=10 Horizontal -85°/+ 85°;(170) Vertical -80° /+ 80°;(160)	CR >=10 Horizontal -85°/+ 85°;(170) Vertical -80° /+ 80°;(160)
Display Colors		16.7 millions (6 bit + FRC)	16.7 millions (6 bit + FRC)	16.7 millions (6 bit + FRC)
Video Synchronization		TTL positive or negative	TTL positive or negative	TTL positive or negative
PC compatible Frequency		30-70KHz(H)/50-75Hz(V) Max.1024 x 768	30-80K Hz(H)/50-75Hz(V) Max.1280 x 1024	30-80K Hz (H)/50-75Hz (V) Max. 1280 x 1024
Adj Color Temperature		9300K/7500K/6500K/ User.	9300K/7500K/6500K/ User.	9300K/7500K/6500K/ User.
Aspect Ratio		4 : 3	4 : 3	4 : 3
Auto Frequency Correction		Y	Y	Y
Functions				
OSD		Y	Y	Y
Volume +/- , Power ON/OFF		Y	Y	Y
Graphic Input(Rear)		RGB D-Sub 15 pin x1 DVI-D 24 pin X1 HDMI Option	RGB D-Sub 15 pin x1 DVI-D 24 pin X1 HDMI Option	RGB D-Sub 15 pin x1 DVI-D 24 pin X1 HDMI Option
Others				
Voltage		100~240 VAC / 50~60Hz	100~240 VAC / 50~60Hz	100~240 VAC / 50~60Hz
Power consumption		36W	36W	36W / 48W
Stand-by		< 2W	< 2W	< 3W
Wall Mount Hole Dimension		VESA Standard 75 x 75 mm	VESA Standard 75 x 75 mm	VESA Standard 75 x 75 mm
RoHs		Y	Y	Y
Chassis Dimension		373(W) x 322(H) x 62(D) mm	442(W) x 361(H) x 52(D) mm	444(W) x 366(H) x 65(D) mm
5in 1 Packing Dimension		565(L) x 515(W) x 410(H) mm	552(L) x 535(W) x 490(H) mm	552(L) x 535(W) x 490(H) mm
5 in 1 Weight in Net		23Kgs/ 5pcs	26Kgs/ 5pcs	28Kgs/ 5pcs
5 in 1 Weight in Gross		24Kgs/ 5pcs	27Kgs/ 5pcs	29Kgs/ 5pcs

* Above monitor specification is typical and varied in accordance to panel used and subject to change without prior notice.